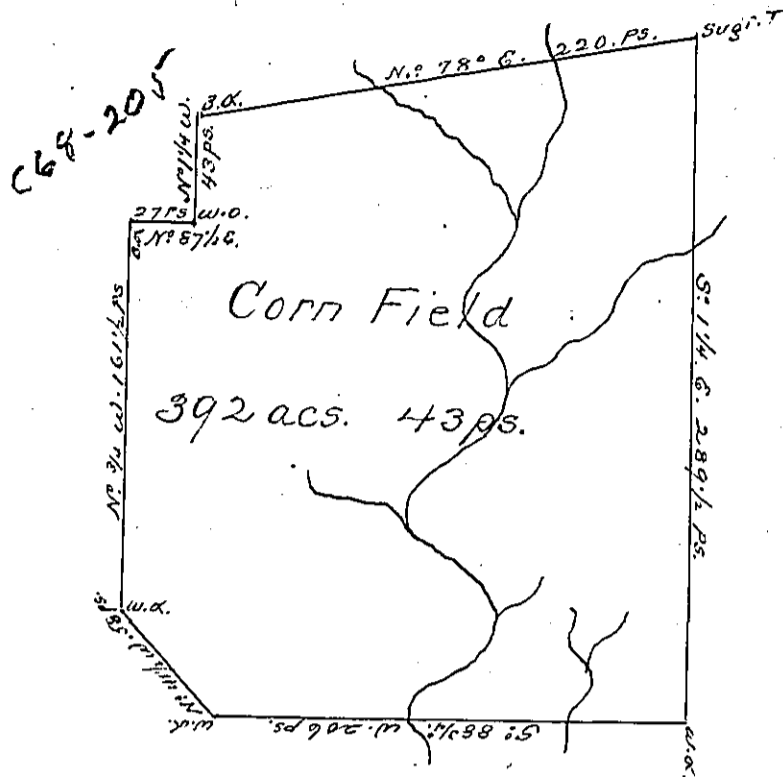


John Marshall



William Campbell

C 144-50

A Draught of a survey called "The Corn Field" situate on the waters of Cross Creek in Washington County, contg. 392 acs. 43 ps. strict measure, executed Decemr. ye 10th. 1786 in consequence of a Certift. for 400 acs. granted to David Vance by the Commis<sup>rs</sup> appointed by Virga. to adjust the claims to unpatented lands in the Counties Monongahela, Johga. and Ohio, and duly entered with the County Surveyor as appears from the List of Entries transmitted from the Surv. Genls office.

ret'd. 15 May 87 Ent'd 21  
 Apl. 80.

Presley Nevill }  
 Mathw. Ritchie }  
 } Dep.

Jno. Lukens Esqr. S. G.

IN TESTIMONY that the above is a copy of the original remaining on file in the Department of Internal Affairs of Pennsylvania, made conformably to an Act of Assembly approved the 16th day of February, 1833, I have hereunto set my Hand and caused the Seal of said Department to be affixed at Harrisburg, this fifth day of March 1901

James Pitta  
 Secretary of Internal Affairs